



**ARTISTRY STUDIO™**  
— *bangkok edition* —

# GLITTERING & EXOTIC

ARTISTRY STUDIO™'s third location is the capital of Thailand, Bangkok.

An energetic and exotic city where tradition and trends blend together.

The temples glisten in gold; the flowers are vibrant and the smiles overflow with happiness.

These brimming glitter and colours will set you free, drawing you closer to becoming a liberated beauty.

Let us welcome this colourful and exotic beauty with open arms.



Bangkok Edition Artist  
Nuarothon and Pathorida Burasahnsou

## Bringing out unexpected smiles of happiness

ARTISTRY STUDIO is inspired by some of the most exciting and attractive cities around the world.

The evocative Bangkok Edition package was designed by two sisters named Nuarothon and Pathorida. The two heads of Bangkok-based Pangunal Studio were both leading Louis Vuitton's opening events and the creative direction of companies such as IKEA, Kleenex, Converse and Coca-Cola (Thailand).



## The land of beauty that brings smiles to all

The capital of Thailand, Bangkok, known as the land of smiles, is also famous for beauty trends with exquisite aesthetics. You might even stumble upon beauty tips while walking around the city!

The Bangkok Edition features a fashionable and dynamic design with Nuarothon illustrating a happy and honest woman, whereas Pathorida focuses on the beautiful views of their hometown, Bangkok.

This collection highlights the sisters' desire for people to smile upon seeing the collection, leaving them with a happy impression.





# EXOTIC SPICY

Warm Honey Hue.  
Versatile and can be  
used as both eyeliner  
and eyeshadow.

## Kajal Eyeliner

Gilded Amethyst  
(123035)



True-to-life colours.  
Sheer sparkle that  
lasts into the night.

## Shimmering Cream Eye Shadow

Smoky Nights (123032)



Bangkok's glitter on your cheeks  
and eyes.

## On-The-Go Palette

Golden Realm (123137)

Use it like a lipstick, or use the  
tapered tip to line and define.

## 2-in-1 Matte Lip Crayon

Ruby Goddess (123027)



# Fire up your cooler side with **EXOTIC SPICY**

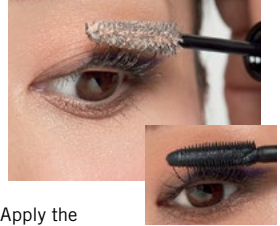
## EYE



Apply Colour [2] from the **On-The-Go Palette** (Golden Realm) on the entire eyelid with a brush. Then apply Colour [1] two-thirds around the corner of the eye with your finger. Add a touch of Colour [1] under the inner corner of the eyes.

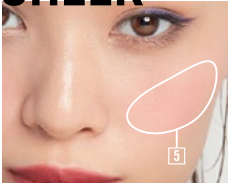


Draw a long line from the outer edges of the eye to the corner of the eye with the **Kajal Eyeliner** (Gilded Amethyst). Apply the **Shimmering Cream Eye Shadow** (Smoky Nights) on two-thirds of the lower eyelid with the brush tip.



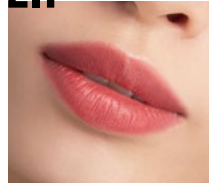
Apply the **Mascara Base Primer** to the entire upper eyelash. Then layer it with the **3-in-1 Mascara**.

## CHEEK



Apply Colour [5] from the **On-The-Go Palette** (Golden Realm) along the cheekbone at a slightly sharp angle using a cheek brush.

## LIP



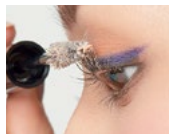
Draw the outline of the lips with the **2-in-1 Matte Lip Crayon** (Ruby Goddess) and paint the insides. Blur the outline with a cotton swab for a natural 3D effect!

## Volume UP

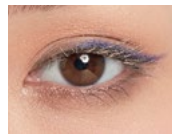
Enhance the glow of your eyes instantly with this mascara base!

The coloured base makes it easy to see where you have painted for more precise application.

**123038**  
**Mascara**  
**Base Primer**



Apply the **Mascara Base Primer** from the base to tip of eyelashes in a combing-like motion.



The order of application should be divided into 3 parts starting with  
→ the middle  
→ eye inner corner  
→ eye corner



After applying the base, finish with the **3-in-1 Mascara** to create the eyes you desire!

**VOLUME UP**  
by 80%!\*

\*Compared with using the 3-in-1 Mascara on its own.





# EXOTIC SEXY

Blends instantly for colourful cheeks!

**On-The-Go Palette**  
Golden Realm (123137)



123032

Beautiful colours without the need for a base. Can also be applied in multiple coats, if needed.

**Shimmering Cream Eye Shadow**

Smoky Nights (123032)  
Silver Violet (123033)



123033

Beautiful, soft textures that are easy to blend. Accentuate your eyes for a come-hither look.

**Kajal Eyeliner**

Gilded Amethyst (123035)



123029

123028

A lip crayon that draws smoothly and produces rich colours.

**2-in-1 Matte Lip Crayon**

Fuchsia Goddess (123029)  
Rose Goddess (123028)

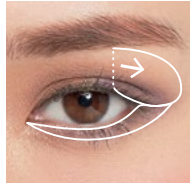


# Shimmer into the mysterious night with **EXOTIC SEXY**

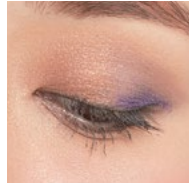
## EYE



Apply **Shimmering Cream Eye Shadow** (Smoky Nights) on the about two-thirds of the eyelid with your finger.



Apply **Shimmering Cream Eye Shadow** (Silver Violet) on the remaining one-third of the corner of the eye and lower eyelid with your finger.



Draw a line on the eyelid on one-third of the eye corner with the **Kajal Eyeliner** (Gilded Amethyst) and blend into the eyeshadow with the brush tip.



After applying the **Mascara Base Primer** to the entire upper eyelashes, apply the **3-in-1 Mascara** along the eye corner to volumise lashes.

## CHEEK



Mix Colours **5** and **6** from the **On-The-Go Palette** (Golden Realm) with a cheek brush and apply it on a slightly higher position on the cheeks for a sexy look. Apply a small amount of the **Face & Body Shimmer Gel** to the high part of the cheekbones with your fingers to create a 3D effect.

## LIP



Draw the outline of the lips with the **2-in-1 Matte Lip Crayon** (Fuchsia Goddess). Apply the **2-in-1 Matte Lip Crayon** (Rose Goddess) on the inner lips for a 3D effect.

## Bright LIGHTS

### Shimmer On

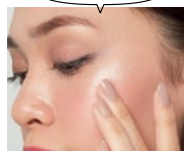
Glittering gel for a sexy shine

Add a 3D glow, for a sexier you. Can also be used on a fully made-up face.

123037  
**Face & Body Shimmer Gel**



ON YOUR FACE!



Use a small amount as a highlighter on the face. Apply on the body along the collarbone, arms and legs for additional glow.

\* Please refrain from using on the eyes.

ON YOUR BODY!





# EXOTIC SWEET

Create different looks with beautiful colours that can be used in multiple ways.

## **On-The-Go Palette** Golden Realm (123137)



Recommended for beginners, as the eyeliner is easy to use.

## **Kajal Eyeliner** Emerald Garden (123034)



Sheer beautiful colours without a base. For grown up yet cute eyes.

## **Shimmering Cream Eye Shadow** Golden Crush (123031)

The best matte lipstick to create soft, supple lips.

## **2-in-1 Matte Lip Crayon** Sunset Goddess (123028)





# Bloom like a pretty flower with **EXOTIC SWEET**

## EYE



Apply the **Shimmering Cream Eye Shadow** (Gold Crush) on the entire eyelid with your finger. Apply Colour **4** from the **On-The-Go Palette** (Golden Realm) on two-thirds of the lower eyelid with a brush tip.

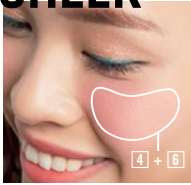


Draw a line with the **Kajal Eyeliner** (Emerald Garden). The key is to draw the upper part of the eyelid thickly and thinly around the corner of the eyes.



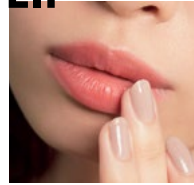
After applying the **Mascara Base Primer** on the upper eyelashes from base to tip, apply a coat or two of the **3-in-1 Mascara**. For the final touch, curl the middle part of the upper eyelashes to emphasise the iris.

## CHEEK



Mix Colours **4** and **6** from the **On-The-Go Palette** (Golden Realm) with a cheek brush and apply it onto the apples of the cheeks.

## LIP



Take some of the **2-in-1 Matte Lip Crayon** (Sunset Goddess) on your finger and dab it all over your lips.

## Add TEXTURE

### INTENSE GAZE

Go freestyle with this eye pencil

#### AS AN EYELINER



Drawing with an eyeliner can be tricky, but its soft texture makes the line appear smooth. From thin to thick, draw lines freely according to your preference. Can also be used for tight-lining.

#### AS AN EYESHADOW



Very creamy and easy to blend when used as an eyeshadow. Simply apply on the eyelid and blend using your fingers!

Twist-up type that requires no sharpening



If you want to make the core thinner, draw out the lead, wrap the core with a tissue and adjust the tip of the core gently while twisting the shaft section of the eye pencil.



# PLAY TIME!

For those who enjoy creative make-up looks

## COLOUR MAGIC

True-to-life colours. Sheer sparkle that lasts into the night.



123031



### Shimmering Cream Eye Shadow

Gold Crush (123031)  
Smoky Nights (123032)  
Silver Violet (23033)

A cream eyeshadow with a texture akin to lamé, sprinkled with jewel-like sparkles. No base is required, and the colours are as you see them and do not fade. Does not crumble easily and maintains a sheer glitter that lasts.

123032



123033



Cares for your eyelashes and increases its volume!



123034

123035

Rich colours can be used as both eyeliner and eyeshadow!

### Kajal Eyeliner

Emerald Garden (123034)  
Gilded Amethyst (123035)

Creates different effects with rich colours. A multi-purpose eye pencil with a soft texture that can be used as an eyeliner, in-liner or eyeshadow. Contains mango seed oil and shea butter.

\*Both are conditioning ingredients.

123038

### Mascara Base Primer

Apart from caring for your eyelashes, it also voluminises them. Coloured base prevents uneven coating and coats eyelashes strand by strand.

Increases volume up to 80%\* when used together with the 3-in-1 Mascara!

\* Compared to using the 3-in-1 Mascara on its own.



123025



123026



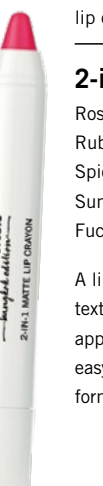
123027



123028



123029



Smooth application with these colourful lip crayons.

### 2-in-1 Matte Lip Crayon

Rose Goddess (123025)  
Ruby Goddess (123026)  
Spice Goddess (123027)  
Sunset Goddess (123028)  
Fuchsia Goddess (123029)

A lip crayon with a creamy and soft texture that highlights a rich colour upon application. A twist-up type that makes it easy to draw lines. Featuring a hard-to-dry formula with long-lasting vivid colours.

# CITY SPARKLE

The glitter of Bangkok on your cheeks and eyes

## On-The-Go Palette

Golden Realm (123137)

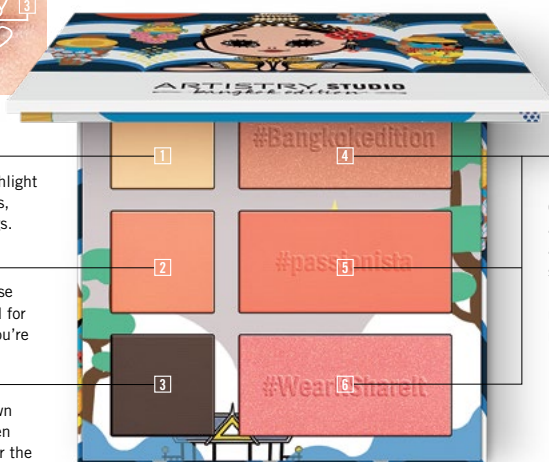
A versatile 6-colour set that can be used as eyeshadow, highlighter and blusher. Diamond powder is added for extra glitter. Comes with a mirror that can also be used to fix your make-up.

### [Level Up]

Simply by combining Colours [1], [2] and [3] from the On-The-Go Palette in that order for the eyes, a beautiful gradation can be created!



2-in-1 Matte Lip Crayon (Spice Goddess)



Colour [1]: The best highlight colour for toning the eyes, lower eyelids and eyebags.

Colour [2]: An easy-to-use matte coral. Can be used for a natural look or when you're feeling playful.

Colour [3]: A matte brown that gives an impact when applied on the eye line or the corner of the eyes.

Colours [4] and [5] are for people with a deep yellowish skin tone. Colour [6] is a cheek colour recommended for reddish skin tones. Each colour can be used on its own or blended together.

This model is using the **Face & Body Shimmer Gel**

(Minute coats on the raised cheekbones)

2-in-1 Matte Lip Crayon (Ruby Goddess)



123037

## Face & Body Shimmer Gel

Inspired by glittering nights in Bangkok, this highlighter can be used on both the face and body to bring out your exotic side. Can also be layered on top of make-up.

> See page 7 for instructions.



# INSTAGRAM

Follow ARTISTRY Malaysia on Instagram!  
Follow ARTISTRY's official Malaysian account for the latest ARTISTRY information and beauty lifestyle.



# #passionista

Let's share the happiness!  
In order to share the joy of living with as many women as possible,  
do share the passion you feel every day under #passionista.  
Join us as a woman full of passion, a "passionista"!

# ARTISTRY STUDIO

Visit our website to learn more about the  
ARTISTRY STUDIO™ Bangkok Edition, from product  
information to make-up techniques.



# Beauty App by ARTISTRY™

ARTISTRY™ Official App  
Would you like to test ARTISTRY™ products virtually?  
Smartphone-friendly! Free download!



For iPhone users



For Android users



Order here

[www.amway.my](http://www.amway.my)

